

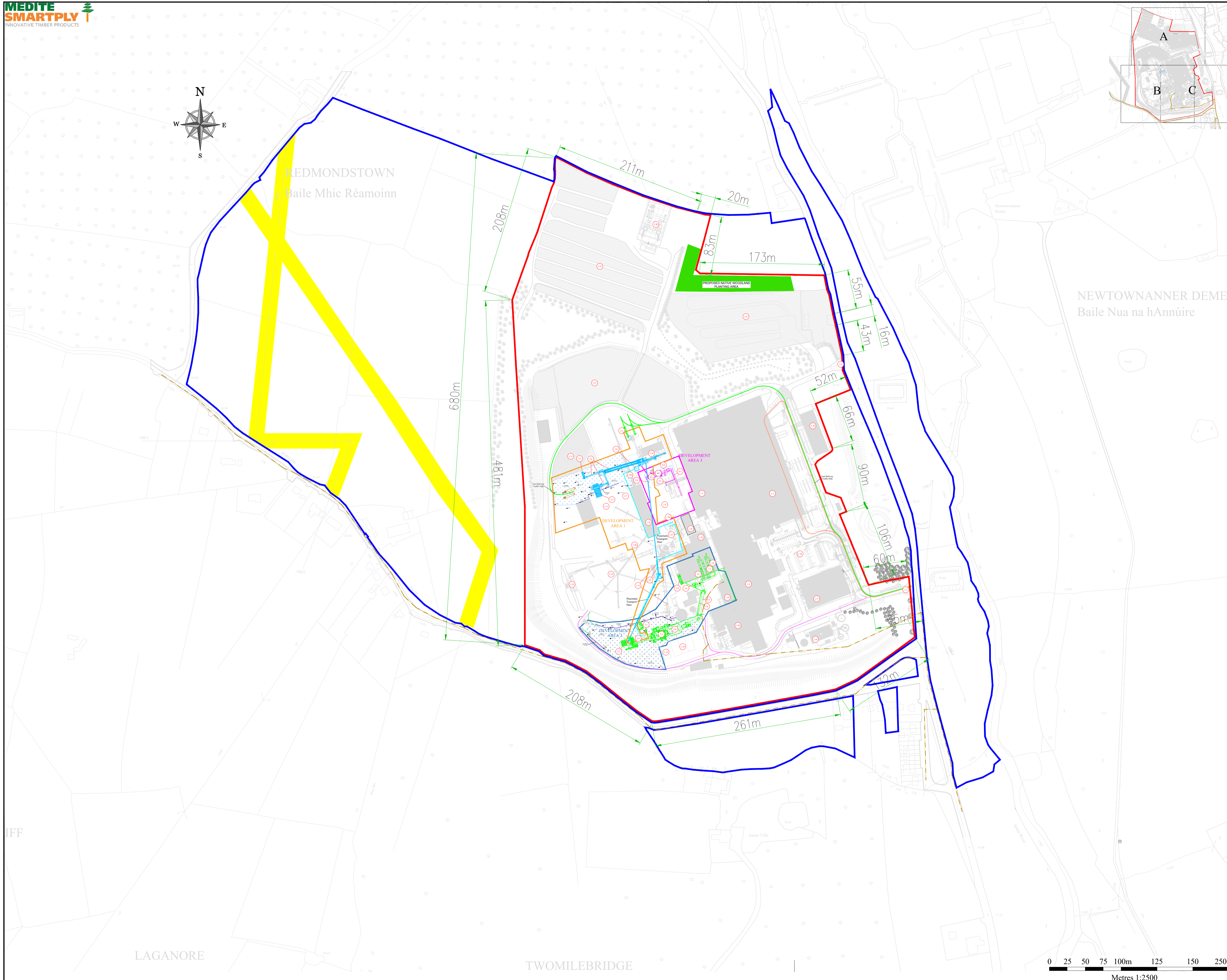
-GENERAL NOTES-

1. This drawing is not to be scaled.
2. Figured dimensions only are to be taken from this drawing.
3. All setting out dimensions are to be checked and confirmed on site prior to commencement of work.
4. Any discrepancies encountered to be brought to the attention Medite Europe DAC without delay.
5. For Planning Purposes Only

- NOTES-

- Extract from Ordnance Survey 2500 SCALE Map Series
ORDNANCE SURVEY (EIRE) LAND SERVICE NO. 1/AL/501/1488 (3) ORDINANCE SURVEY & GOVERNMENT OF IRELAND
- MEDITE LANDOWNERSHIP
- PLANNING APPLICATION AREA (C. 28.7 HA)
 - HWY FUEL DELIVERY TRAFFIC ROUTE
 - HWY FINISHED PRODUCT TRAFFIC ROUTE
 - PROPOSED ADDITIONAL NON-PERMEABLE HARDSTANDING
 - WOODLAND AREA
 - DEVELOPMENT AREA 1
 - DEVELOPMENT AREA 2
 - DEVELOPMENT AREA 3
 - WAYLEAVES AND PLANT
 - EXISTING BUILDINGS AND PLANT
 - EXISTING GAS LINE
 - OPERATIONAL ACCESS FOR MAINTENANCE TRAFFIC
 - FINISHED FLOOR LEVEL
 - TOP OF CONCRETE LEVEL
 - TOP OF STEEL LEVEL

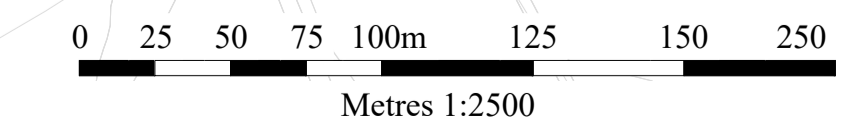
- KEY PLAN**
- EXISTING INFRASTRUCTURE**
- 1.1 SOUTHERN SITE ENTRANCE
 - 1.2 NORTHERN SITE ENTRANCE
 - 1.3 WAREHOUSE / OFFICE & STORES
 - 1.4 PRODUCTION LINE 1 AREA
 - 1.5 PRODUCTION LINE 2 AREA
 - 1.6 LINE 1 WOOD BIOMASS FIRED BOILERS
 - 1.7 LINE 1 DRYERS BUILDING
 - 1.8 LINE 2 DRYER
 - 1.9 LINE 2 WOOD BIOMASS FIRED THERMAL FLUID HEATER
 - 1.10 DE-BARKER BUILDING
 - 1.10A DEBARKER INFEEED CONVEYOR
 - 1.11 OUTDOOR FUEL STORAGE / FUEL SHED
 - 1.12 CHIP STORAGE YARD
 - 1.13 CLASS-CLEANER
 - 1.14 SURFACE WATER MANAGEMENT LAGOONS
 - 1.15 CHEMICAL STORAGE BUILDING
 - 1.16 WASTE WATER TREATMENT PLANT (WWTP)
 - 1.17 WATER STORAGE PONDS
 - 1.18 CAR PARK
 - 1.19 MTB BUILDING
 - 1.20 SUBSTATION
 - 1.21 LOG STORAGE AREAS
 - 1.22 TRUCK TIPPER
 - 1.23 REFINER BUILDING
 - 1.24 CHIP STORAGE SILOS
 - 1.25 LINE 1 GAS FIRED THERMAL FLUID HEATER
 - 1.26 EDGE TRIM SILO
 - 1.27 LINE 1 SANDER DUST SILOS
 - 1.28 LINE 1 FIBER HANDLING BUILDING
 - 1.29 FINISHED GOODS WAREHOUSE
- PROPOSED DEVELOPMENT**
- DEVELOPMENT AREA 1**
- 2.1 FUEL RECEPTION UNITS
 - 2.2 FUEL INFEEED HOPPER
 - 2.3 WALKING FLOOR INFEEED SYSTEM
 - 2.4 CONVEYING SYSTEMS #1
 - 2.5 CONVEYING SYSTEM #2 (to Line 1 Energy Plant)
 - 2.6 CONVEYING SYSTEM #2 (to Line 2 Energy Plant)
 - 2.7 PNEUMATIC (DRY FUEL) SYSTEM
 - 2.8 EDGE TRIM SILO
- DEVELOPMENT AREA 2**
- 3.1 LINE 1 WET FUEL METERING BIN
 - 3.2 LINE 1 ENERGY SYSTEM FUEL FEED CONVEYOR
 - 3.3 LINE 1 ENERGY PLANT
 - 3.4 LINE 1 DRY ELECTROSTATIC PRECIPITATOR
 - 3.5 LINE 1 HOT GAS DUCT
 - 3.6 LINE 1 START UP STACK
 - 3.7 LINE 1 DUST SILO
 - 3.8 LINE 1 THERMAL FLUID PIPING
 - 3.9 LINE 1 STEAM GENERATOR
- DEVELOPMENT AREA 3**
- 4.1 LINE 2 ENERGY PLANT
 - 4.2 LINE 2 DRY ELECTROSTATIC PRECIPITATOR
 - 4.3 LINE 2 HOT GAS DUCT
 - 4.4 LINE 2 START UP STACK
 - 4.5 LINE 2 THERMAL FLUID PIPING



NEWTOWNANNER DEMESN
Baile Nua na hAnnúire

LAGANORE

TWOMILEBRIDGE



SLR
SLR CONSULTING IRELAND
7 DUNDURM BUSINESS PARK
WINDY ARBOUR
DUBLIN 14
T: +353-1-2964667
F: +353-1-2964676
www.slrconsulting.com

STAGE	REV	REVISION NOTE	DATE	INL
Project Title: Replacement of Existing Energy Systems				
Project Code: Medite Europe DAC Keshmooilow, Clonmel, Tipperary Tel: +353 51 922 9222 Fax: +353 51 922 9211 www.meditapl.com				
Title: Proposed Operational Site Layout				
Machine Name: 01 - 00 - 700 - 000 - 00				
Pu Number:	700	Process Description:	Drawn By: S Murphy	Approval By: M O'Sullivan
Scale:	1:2500 @ A1	Date:	29/09/2023	Drawing Number: ABP-311991-21.PL08
Rev:	01			